



# Mississippi Valley Workforce Development Board

---

## Youth Committee Meeting Agenda

Monday, October 9, 2023, at 4:00 p.m.

Join Zoom Meeting

<https://us02web.zoom.us/j/83601949703?pwd=RCszWjdQeU1ONlZKYnB3aUxRa2VZZz09>

Meeting ID: 836 0194 9703

Passcode: 548009

One tap mobile: +13052241968,,83601949703# US

Called to Order

Jacob Nye

Roll Call

Tyler Lanz

\*Consent Agenda

Jacob Nye

Excused Absences

Approval of Agenda

Approval of Previous Meeting Minutes

### STANDING REPORTS

Equus Youth Report (Page 4) Virtual Reality

Kendra Schaapveld

Metrics Report (Page 12)

Kendra Schaapveld

### NEW BUSINESS

Predictive Reports (Page 29)

Kendra Schaapveld

WCA Data

Miranda Swafford

Other Business

Public Comment

Adjourn

Jacob Nye

\*Items Requiring a Vote \*\* Items Requiring a Roll Call vote

### Accommodations

Accommodation is available upon request for individuals with disabilities. If you need accommodation, please contact Mandy Tripp at [assistant@mississippivalleyworkforce.org](mailto:assistant@mississippivalleyworkforce.org) or at 1-844-967-5365 option 2.



# Mississippi Valley Workforce Development Board

---

## **Youth Committee Meeting Minutes**

Monday, September 11, at 4:00 p.m., via Zoom

**Members Present:** Rebecca Ruberg, Regina Matheson, Heather Halbrook, Charlene Fitzgerald, Carol Reynolds, Andy Sokolovich, and Martha Bell

**Members Absent:** Jacob Nye (excused)

**Staff Present:** Miranda Swafford, Executive Director, Andrea Taylor, Strategic Partnership Specialist, Mandy Tripp, Compliance Officer, and Tyler Lanz, Communications Assistant

**CEO Present:** None

**Equus Staff:** Kendra Schaapveld, Title One Director, Taylor Longstreth, Title One Operations Manager, Tabytha Seigfried, Quality Assurance, and Dashawn Banks, Outreach Specialist

**One-Stop Operator:** None

### **CALLED TO ORDER**

Ruberg called the meeting to order at 4:00 p.m.

### **QUORUM**

There was a quorum to conduct business.

### **CONSENT AGENDA**

The consent agenda included approval of the agenda, approval of previous meeting minutes, and approval of Nye's excused absence. Matheson made a motion to approve the consent agenda, seconded by Sokolovich, and motion carried.

### **EQUUS AUGUST YOUTH REPORT**

Schaapveld reviewed current outreach strategies and highlighted some upcoming events, including the You Choose career exploration event. Schaapveld reported 8 out-of-school youth enrollments and 3 in-school youth enrollments for August, 10 entered into Occupational Skills Training, and 2 entered into Work-Based Learning. 7 stipends and 13 incentives were paid out in August. Schaapveld also reported outcomes for August: 3 CNA, 1 Event Management and Design, 1 Phlebotomy Tech, 1 HiSED, and 6 unsubsidized employments. The customer satisfaction rate was 97.37% with 26 surveys completed, a much higher turnout than July.

### **VIRTUAL REALITY METRICS REPORT**

Schaapveld stated this report has not yet been received from Transfr VR.

### **Q4 PERFORMANCE**

Tripp presented the program performance metrics for April 1, 2023 through June 30, 2023, and advised that deliverables were not quite met, though there were notable increases in credential attainment and measurable skills gain.

### **WCA UPDATES**

Swafford discussed updates to the Workforce Communities of Action initiative. A focus group has been conducted to gather information about employer perceptions of work-based learning programs. A virtual employer focus group is scheduled for September 29, 2023 for the same purpose. A youth survey is being conducted and has received 30 responses so far. Swafford and Schaapveld are also conducting interviews with other successful work-based learning programs.

### **OTHER BUSINESS**

There was no other business.

### **PUBLIC COMMENT**

There was no public comment.

### **ADJOURN**

Matheson made a motion to adjourn, seconded by Reynolds, and motion carried. Ruberg adjourned the meeting at 4:17 p.m.

# Equus Youth Report

**Outreach**

The Burlington team worked with Lee County Economic Development to expose students to new careers! The team also presented at Lee County Juvenile Detention Center. We were also present for the Clinton Information Fair and the Southeast Iowa Job Fair. Our Outreach Specialist presented to the 180 Group and he was regularly at his office hours at the Clinton Community College campus.

**Performance**

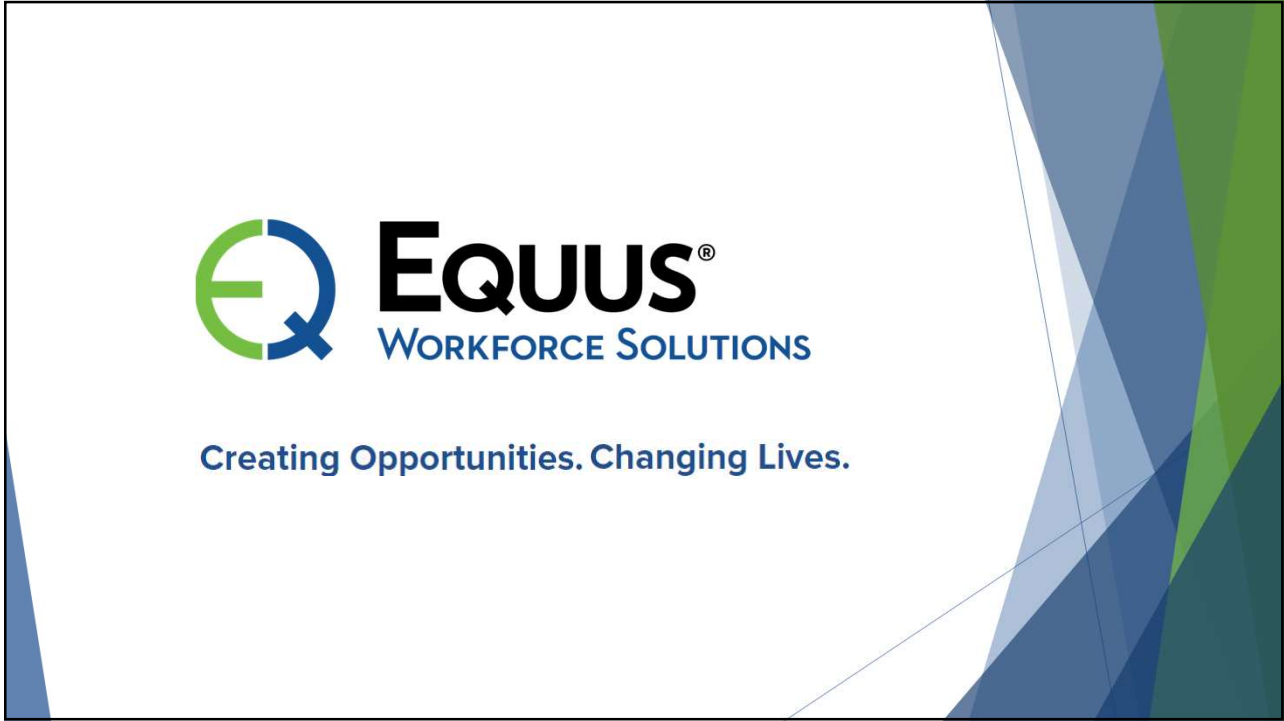
The last month quarter one saw 1 out of school youth enrolled. The enrollment goal is currently at 40% completed. 1 youth started school which exceeded the deliverable at 117%.

Work-based learning saw 2 youth enter placements in the last month of the quarter. 1 in school youth began an internship and one out of school youth began a work experience. This brings the overall performance to 31% of the achieved deliverable for the program year.

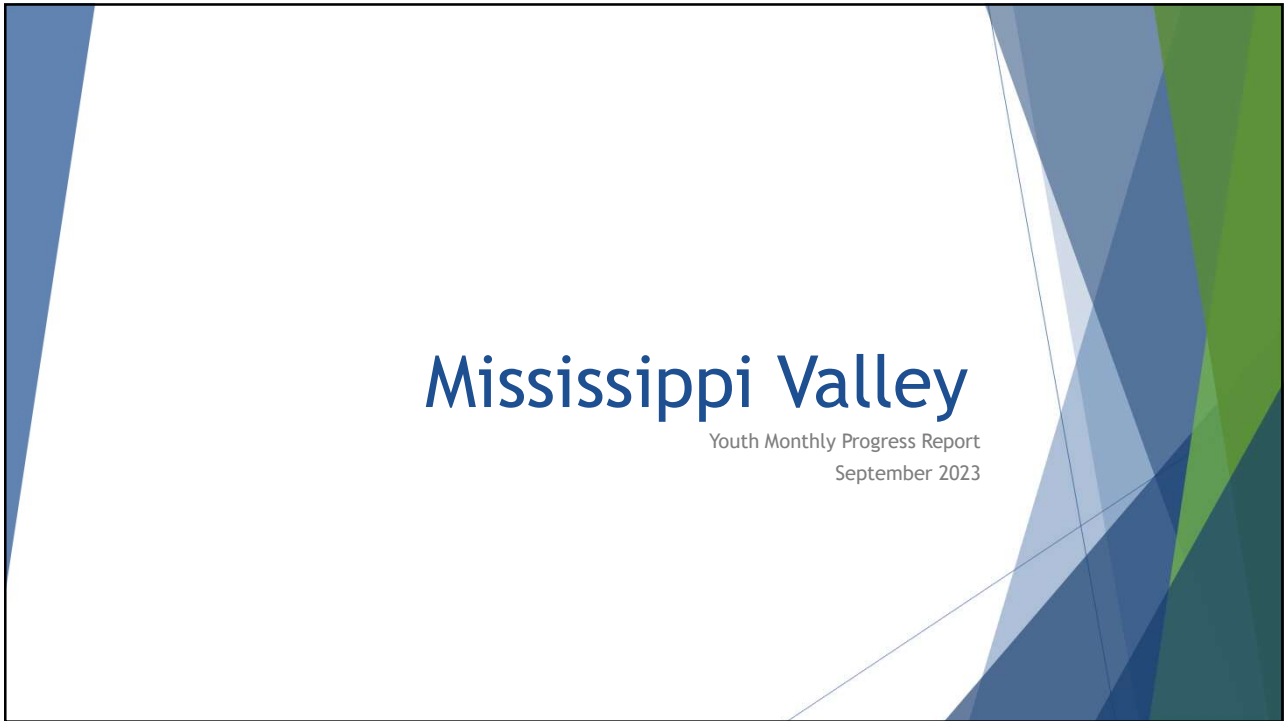
Program customer service continues to perform above expectations at 96.34% customer satisfaction rate. There were 14 surveys completed.

**Challenges**

We continue to experience a challenge with motivating our youth and interpersonal communication skills.



1

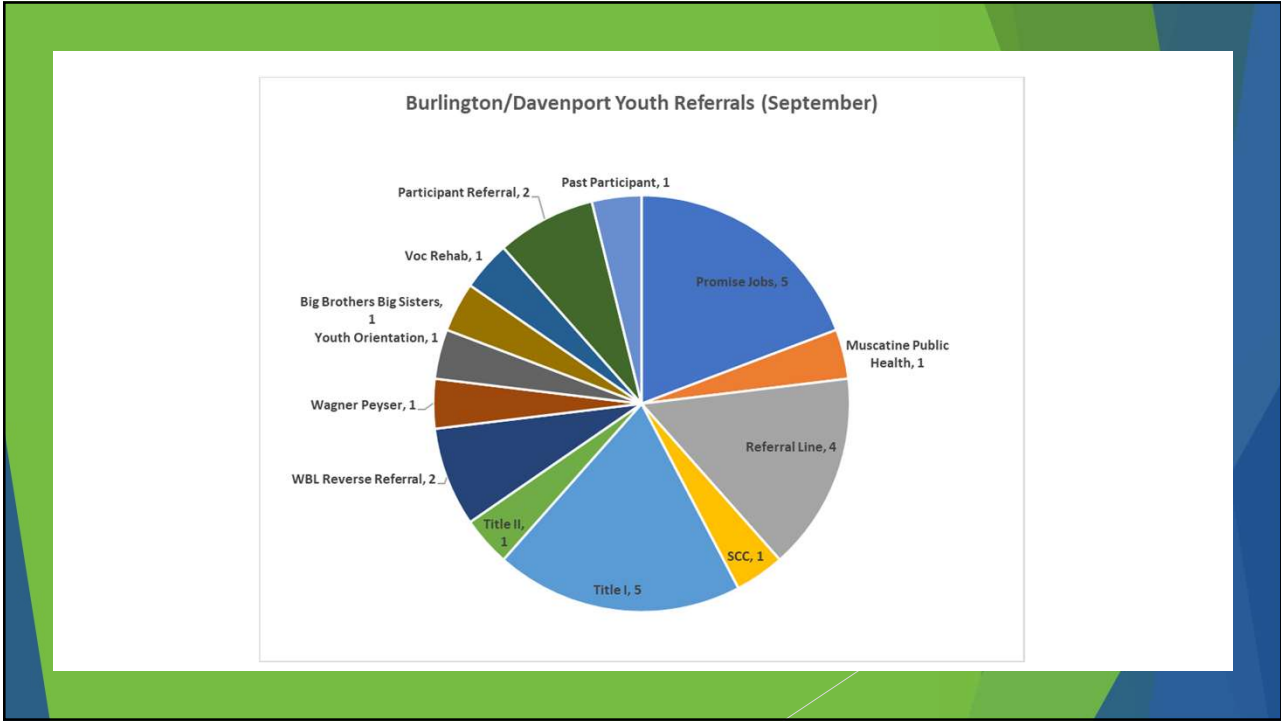


2

# Outreach

- Lee County Economic Development
- Lee County Juvenile Detention
- Clinton Information Fair
- Southeast Iowa Job Fair
- 180 Group
- Clinton Community College
- Family Connections
- Lee County Interagency
- Clinton Advancement Center

3



4

## Performance

Enrollments	September	YTD Actual	% of Goal (60)
In School Youth	0	3	
Out of School Youth	9	19	40%

Occupational Skills Training	September	YTD Goal	YTD Actual	% of Goal
Occupational Skills Training	1	12	14	117%

Work-Based Learning	September	YTD Goal	YTD Actual	% of Goal
Work-Based Learning	2	27	7	31%

5

## Caseload

### Youth

- ▶ 115 Active
- ▶ 60 Follow Up
- ▶ 229.16 Average caseload
- ▶ 17 Exit
  - ▶ 9 Employed
  - ▶ 5 Unknown
  - ▶ 3 Not employed

6



IA MISSISSIPPI VALLEY IOWA ADW	09/18/23	
IA MISSISSIPPI VALLEY IOWA ADW	09/20/23	
IA MISSISSIPPI VALLEY IOWA ADW	09/25/23	
IA MISSISSIPPI VALLEY IOWA ADW	09/26/23	Anna trade act coordinator is amazing!!!
IA MISSISSIPPI VALLEY IOWA ADW	09/25/23	Ever one there has been kind and courteous. And my adviser Michaela Specketer is extremely helpful and checks on my progress frequently, and always ask how she help me.
IA MISSISSIPPI VALLEY IOWA ADW	09/25/23	Michaela is a great rep and above all else having the supportive efforts and knowing she is rooting for me makes me feel so much better about the task I am taking c life!
IA MISSISSIPPI VALLEY IOWA ADW	09/01/23	Staff is exceptional Meagan is truly an asset to your company always following up with me and replying back promptly.
IA MISSISSIPPI VALLEY IOWA ADW	09/22/23	Verv professional.

**96.34% Customer Satisfaction Rate**

**14 Surveys completed**

Legacy in Action

7

## Youth Elements

These are youth activities that were opened new for the month

Youth Elements	Service	Services Provided in September	Youth Impacted in September	PY23 Services Provided	PY 23 Youth Impacted
1	Tutoring, study skills training, dropout prevention	0	0	3	3
2	Alternative secondary school services	0	0	0	0
3	Paid and unpaid work experience	2	2	6	6
4	Occupational skills training	1	1	14	14
5	Education offered concurrently with workforce preparation	0	0	0	0
6	Leadership development	0	0	0	0
7	Support Services	42	29	99	77
8	Adult mentoring	0	0	0	0
9	Follow-up services	2	2	11	9
10	Comprehensive guidance and counseling	0	0	0	0
11	Financial literacy education	0	0	0	0
12	Entrepreneurial skills training	0	0	0	0
13	Services that provide labor market information	54	49	166	150
14	Postsecondary preparation and transition activities	1	1	1	1

8

## Stipends/Incentives

Stipends-paid out for attendance for high school or high school equivalency or class related to 14 elements

- ▶ 22 paid out

Incentives-paid out for measurable skills gain, achievement of basic skills, completion of a goal, FEO credits, perfect attendance for employment, employed after exit

- ▶ 20 paid out

9

## Virtual Reality Training

- ▶ Report

10



11

## Participant Highlights

Youth Participant from Scott County successfully completed their CDL certification. Participant was working for SJ Energy and was temporarily laid off when they came into the office seeking services. Participant was able to complete at 160 Driving Academy and get their CDL license. Participant stated several times over the training that they were grateful for our help because they would not have been able to do this without us. During the training, the participant stated that when they go back to work, they will be able to get paid more and have more opportunity to grow in the company because of this credential.

20, OSY, Des Moines County is a co-enrollment with Vocational Rehabilitation. Previously, Nick (his former case manager) and Becky (his VR counselor) had had difficulty finding him stable employment or work-based learning placement due to a charge on his background. After this was cleared, Jen and I placed him in a WEP with the Burlington Rec Plex, and he has been receiving RAVE reviews from his supervisor ever since. He has grown immensely in his self-esteem and confidence, and the Rec Plex decided they want to officially hire him on for the remainder of this season and to return next season!

12

# Virtual Reality Metrics



# Monthly Progress Review & Optimization

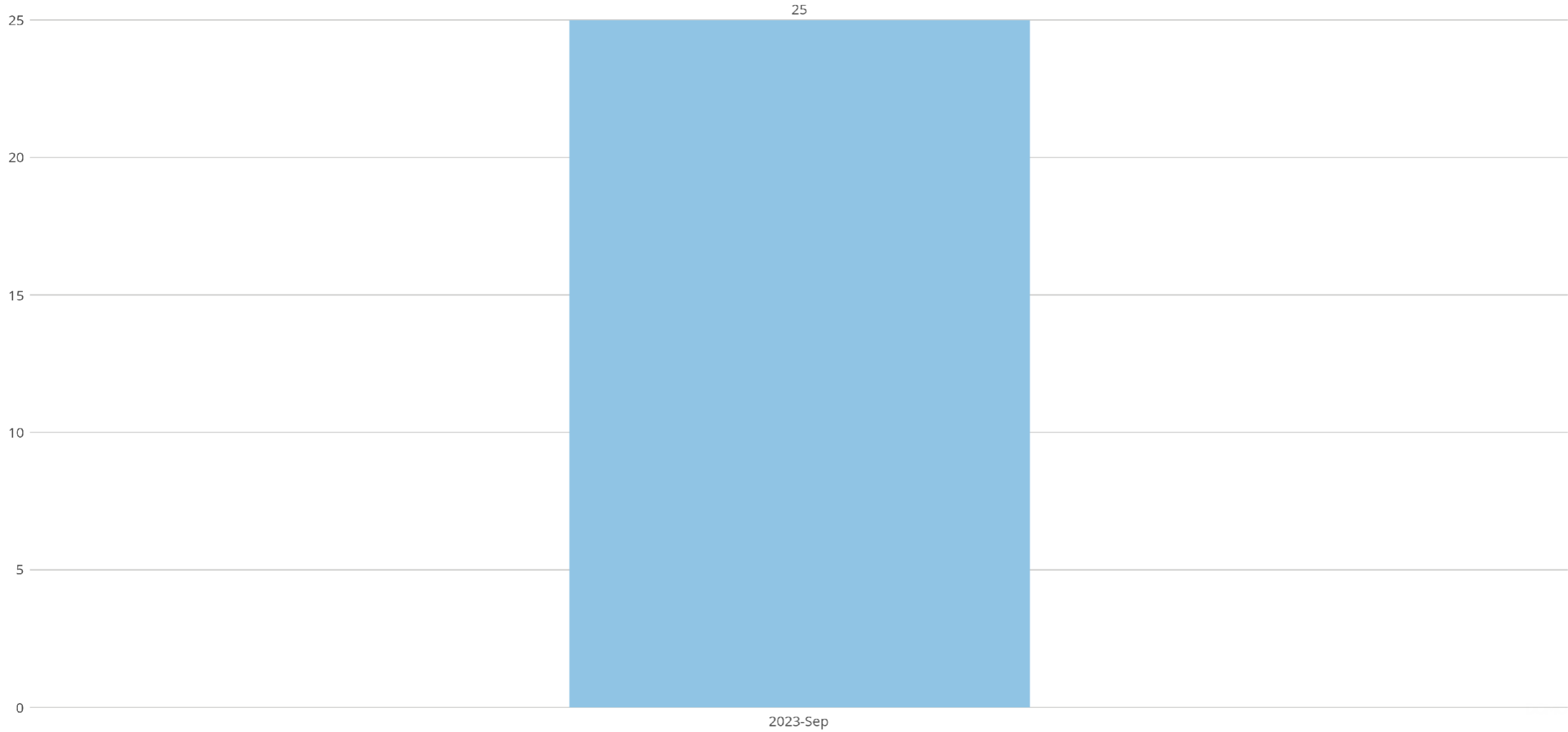


This report summarizes key metrics for Equus - Mississippi Valley Workforce Development Board

No data in filtered range

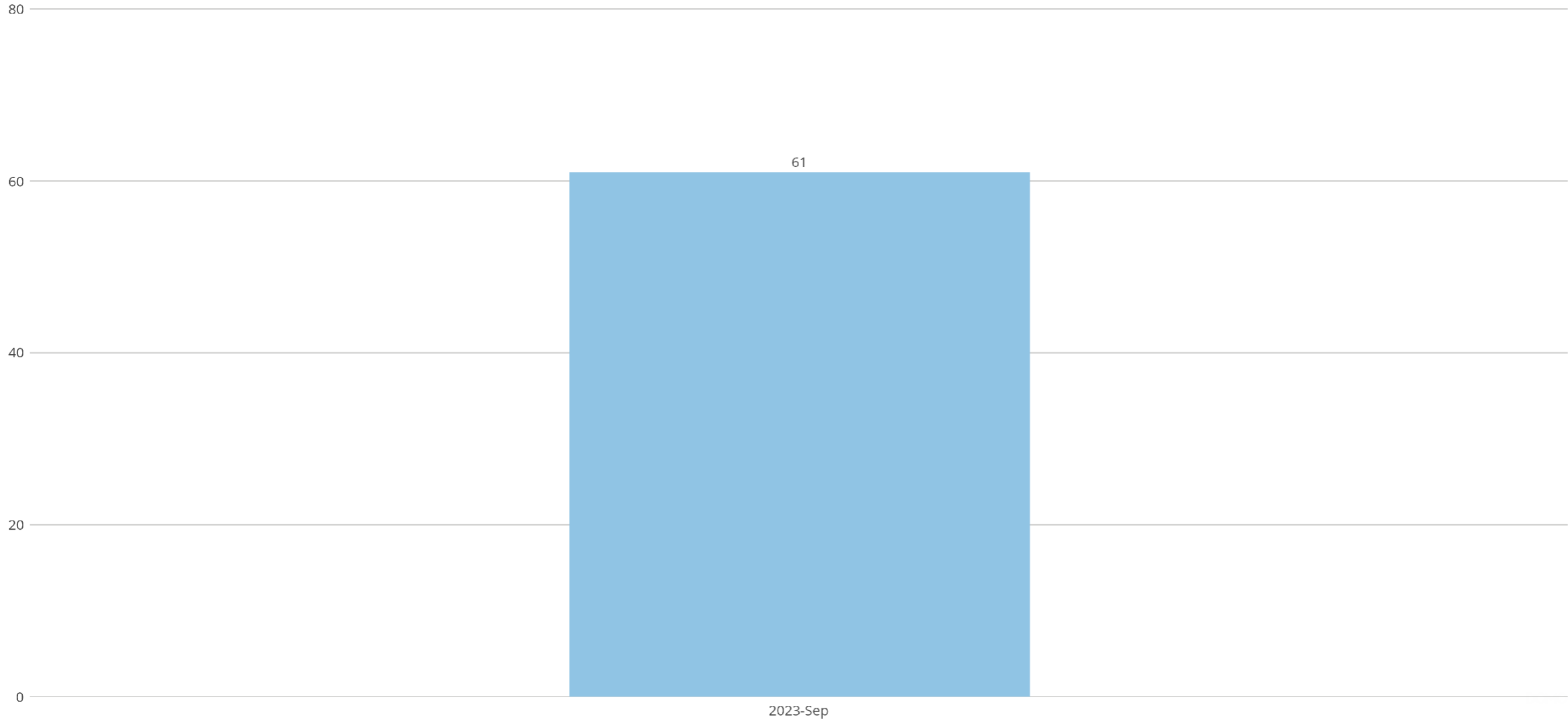
# Career Exploration: Unique Users by Month

25 Unique Users



# Career Exploration: Sims Started by Month

61 Simulation Starts



# Career Exploration: Sims Started by Occupation

Assist with Knee Surgery	12
Rebuild a Destroyed Communication To...	5
Helping an Emergency Patient	5
Help at a Car Crash	5
Hotel Front Desk/FirstImpressionGuest	4
Drill an Underground System	4
Install a Solar Panel on a Home	3
Find the Contaminated Microchip	3
Restore Power to a Neighborhood	3
Fix an App Server Outage	2
Restore Power to an Entire Town	2
Fix a Power Outage at Hospital	2
Other	7

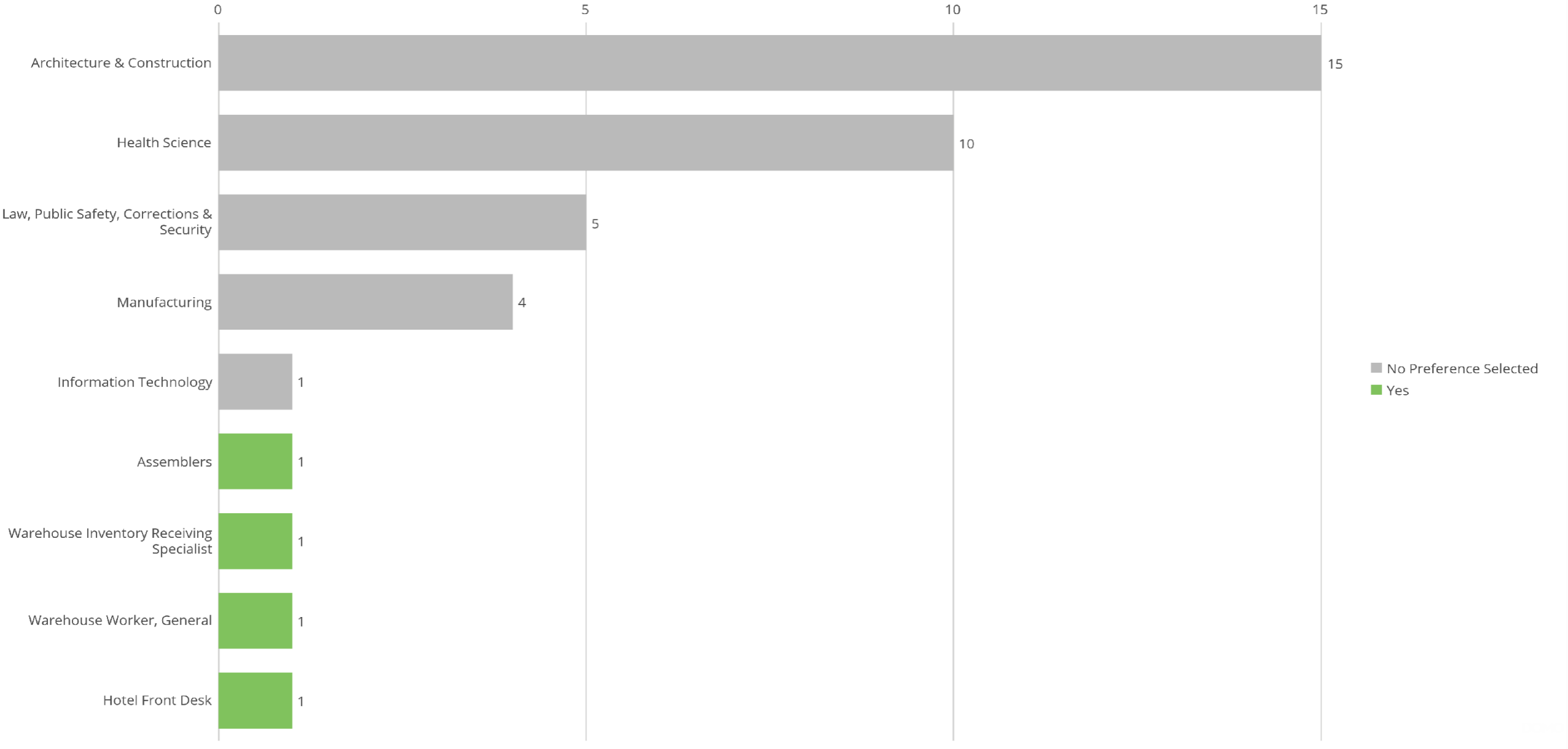


Total  
57

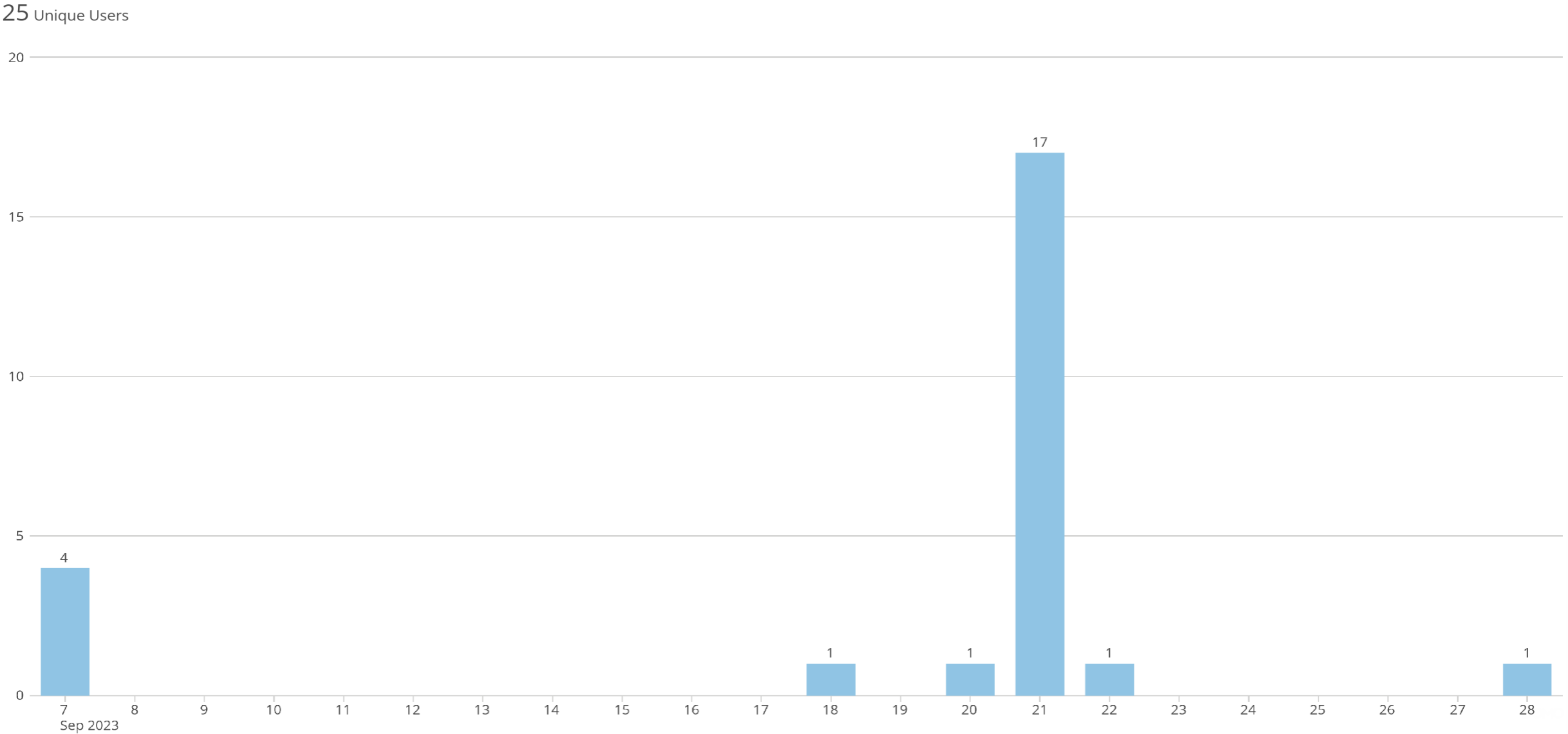


# Career Exploration: Sims Completed by Preference

39 Sims Completed

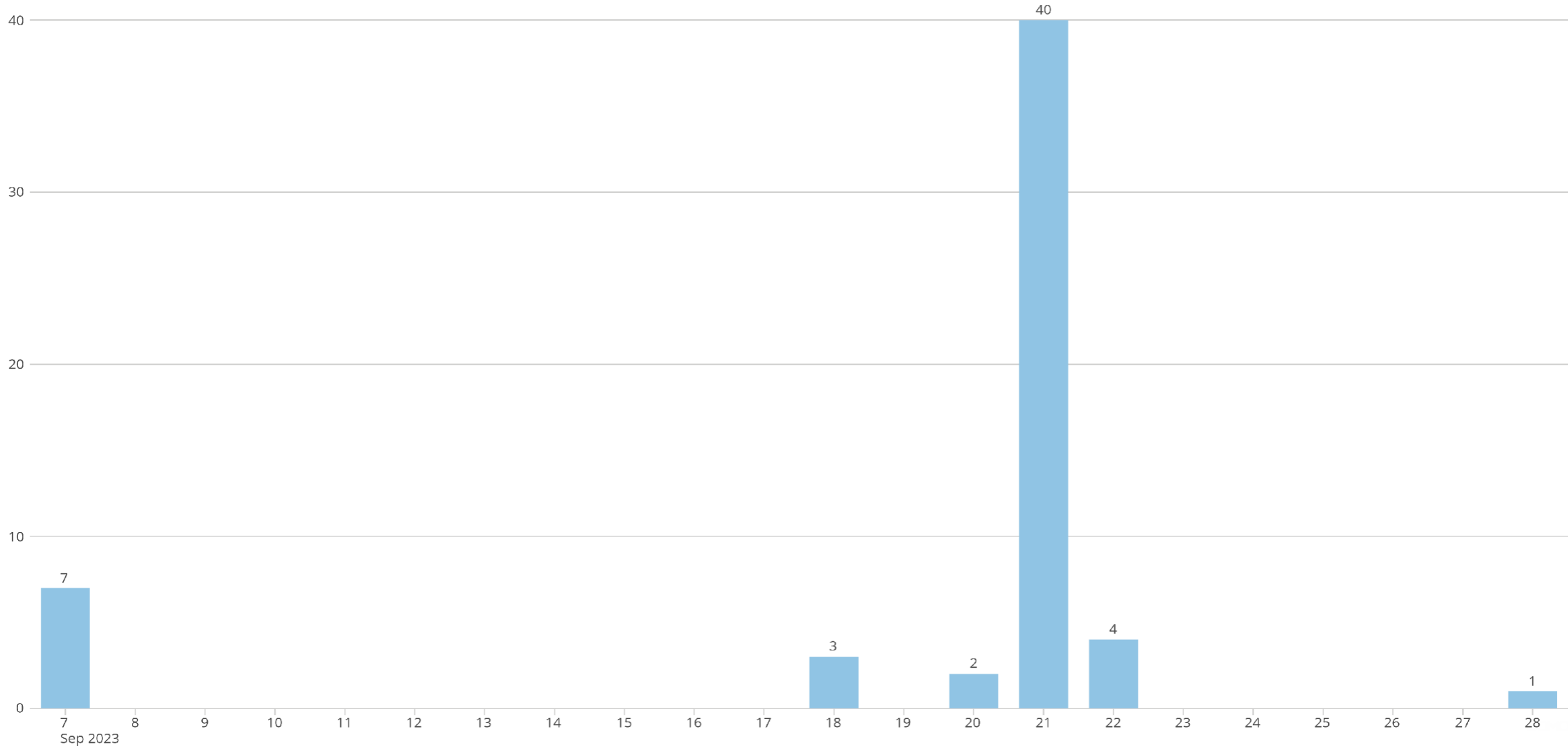


# Career Exploration: Unique Users in Last 30 Days by Day

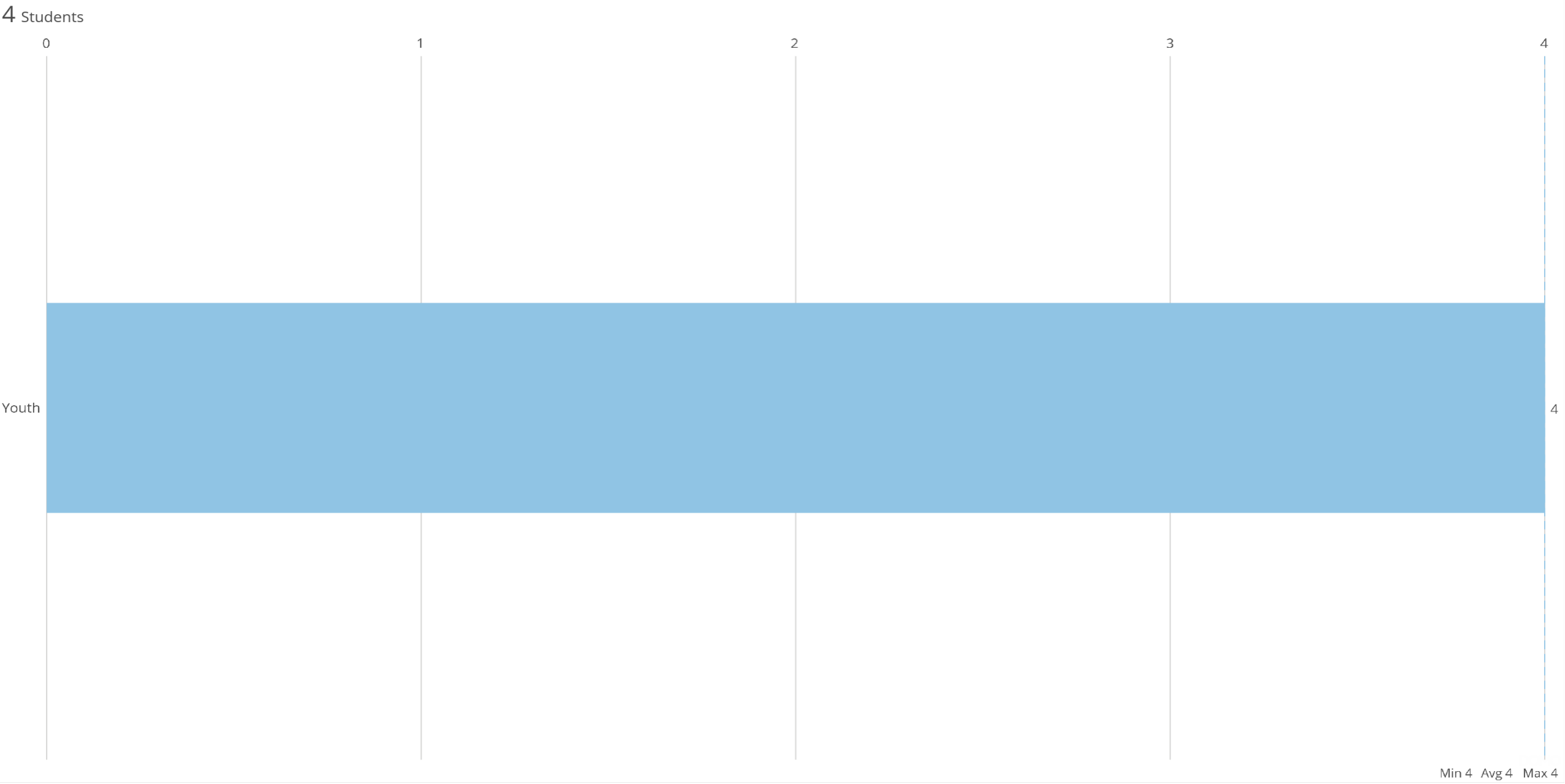


# Career Exploration: Started in Last 30 Days by Day

57 Sims Started

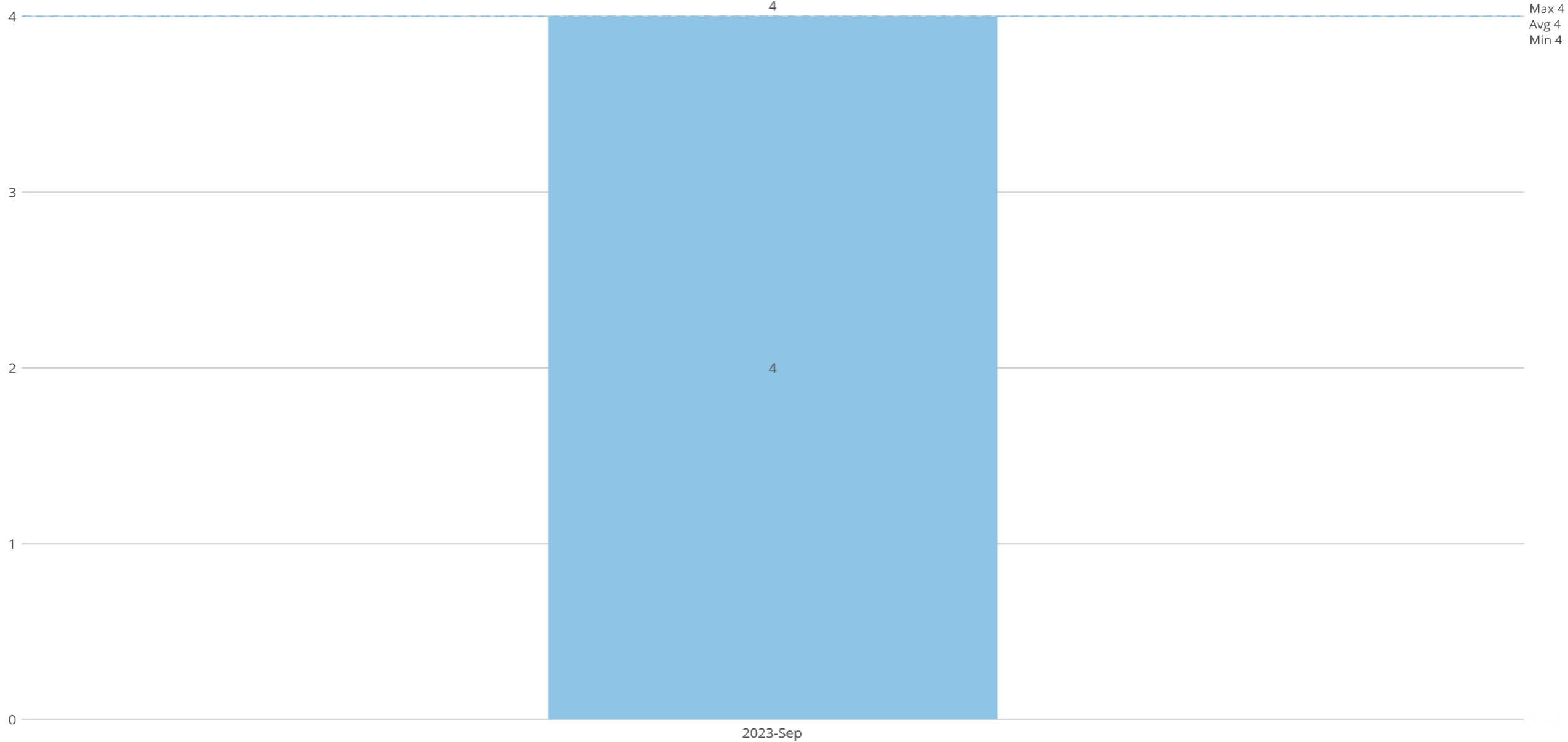


# Virtual Training Facility: Total Trainees by Class



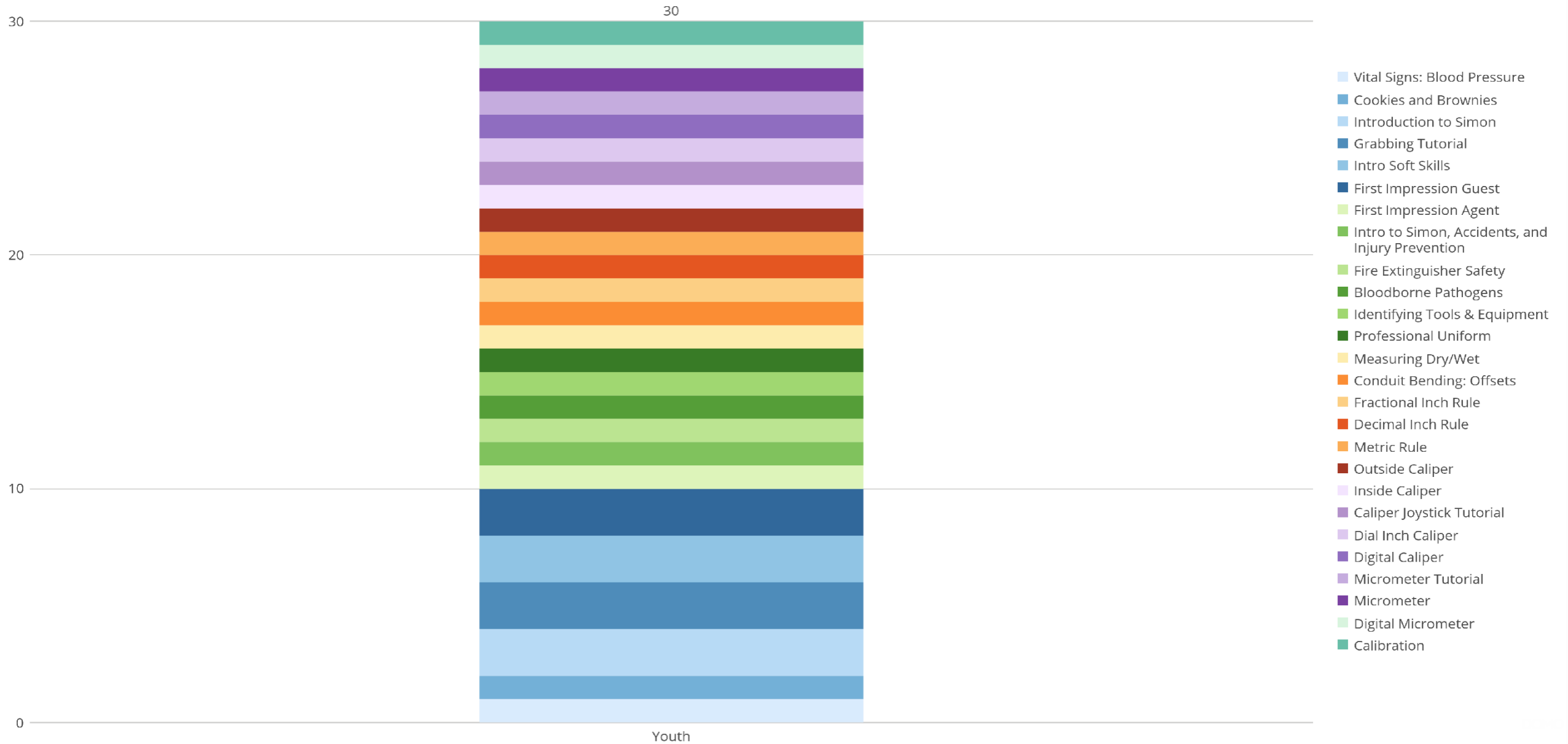
# Virtual Training Facility: Unique Users Per Month by Class

4 Unique Trainees



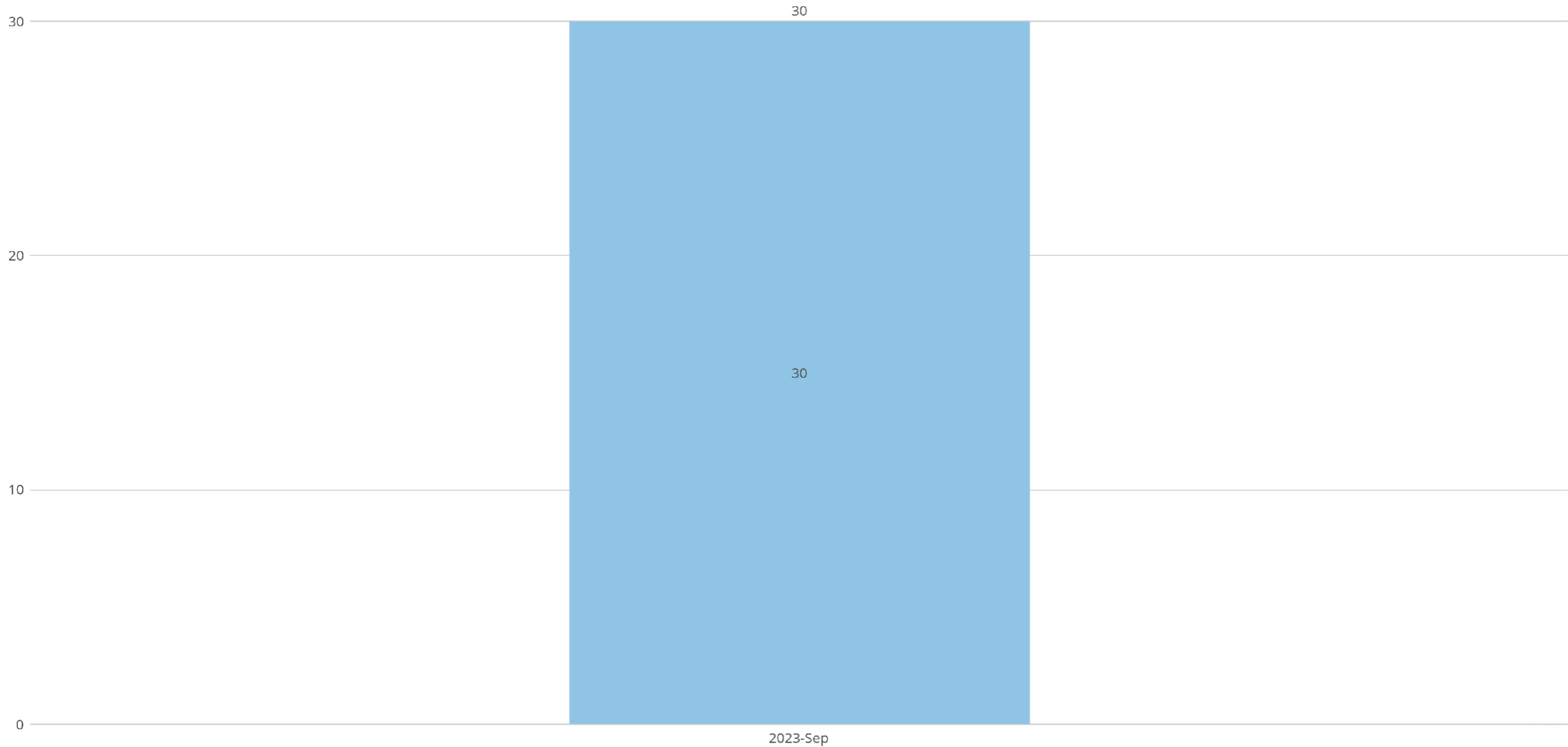
# Virtual Training Facility: Completed Sims by Class with Sim Detail

30 Completed Sims



# Virtual Training Facility: Completed Sims by Month

30 Completed Sims



# Virtual Training Facility: Completed Sims by Sim Detail

30 Completed Sims

Total  
30

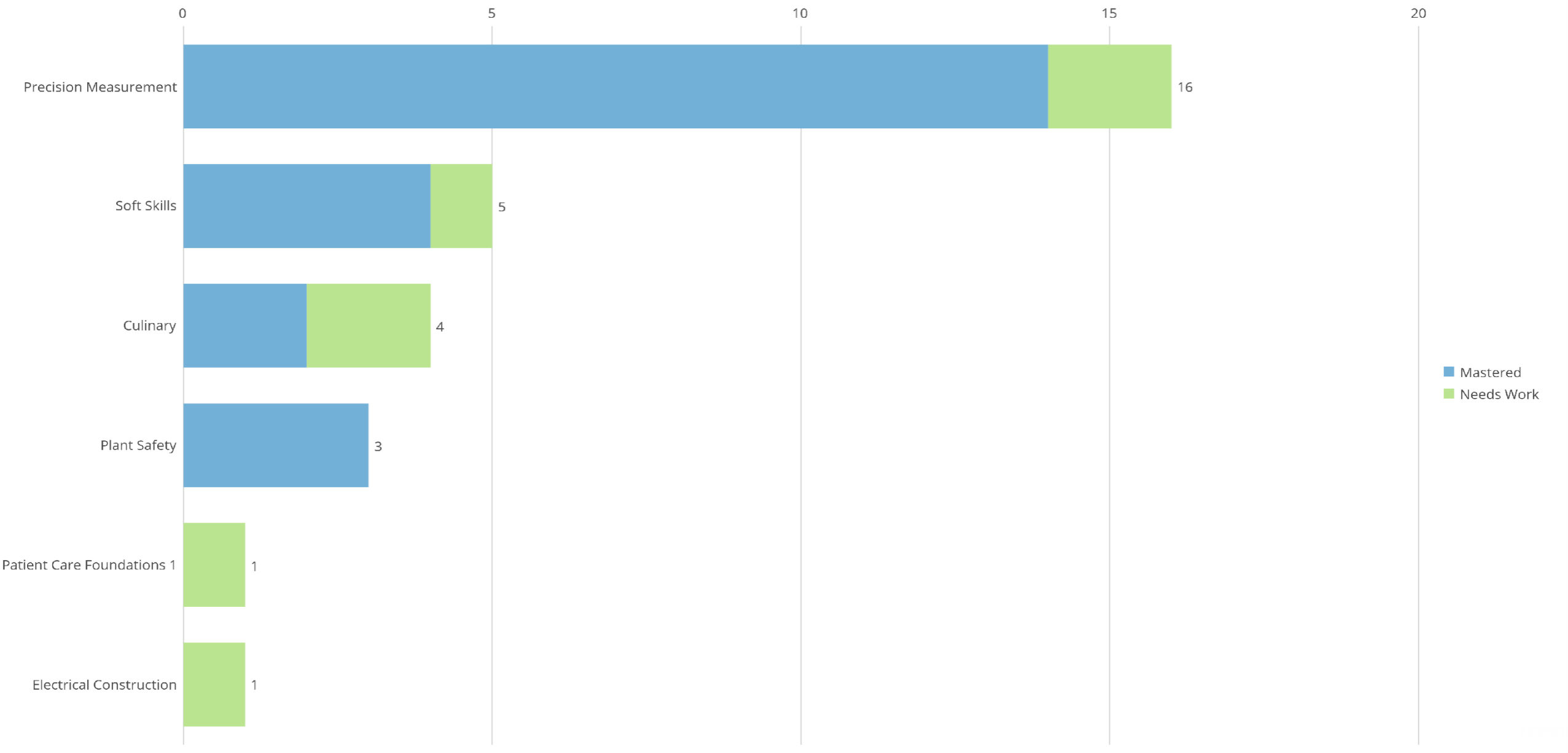
First Impression Guest	2	6.67%
Intro Soft Skills	2	6.67%
Grabbing Tutorial	2	6.67%
Introduction to Simon	2	6.67%
Calibration	1	3.33%
Digital Micrometer	1	3.33%
Micrometer	1	3.33%
Micrometer Tutorial	1	3.33%
Digital Caliper	1	3.33%
Dial Inch Caliper	1	3.33%
Caliper Joystick Tutorial	1	3.33%
Inside Caliper	1	3.33%
Other	14	46.7%





# Virtual Training Facility - Sims by Module with Mastery Detail

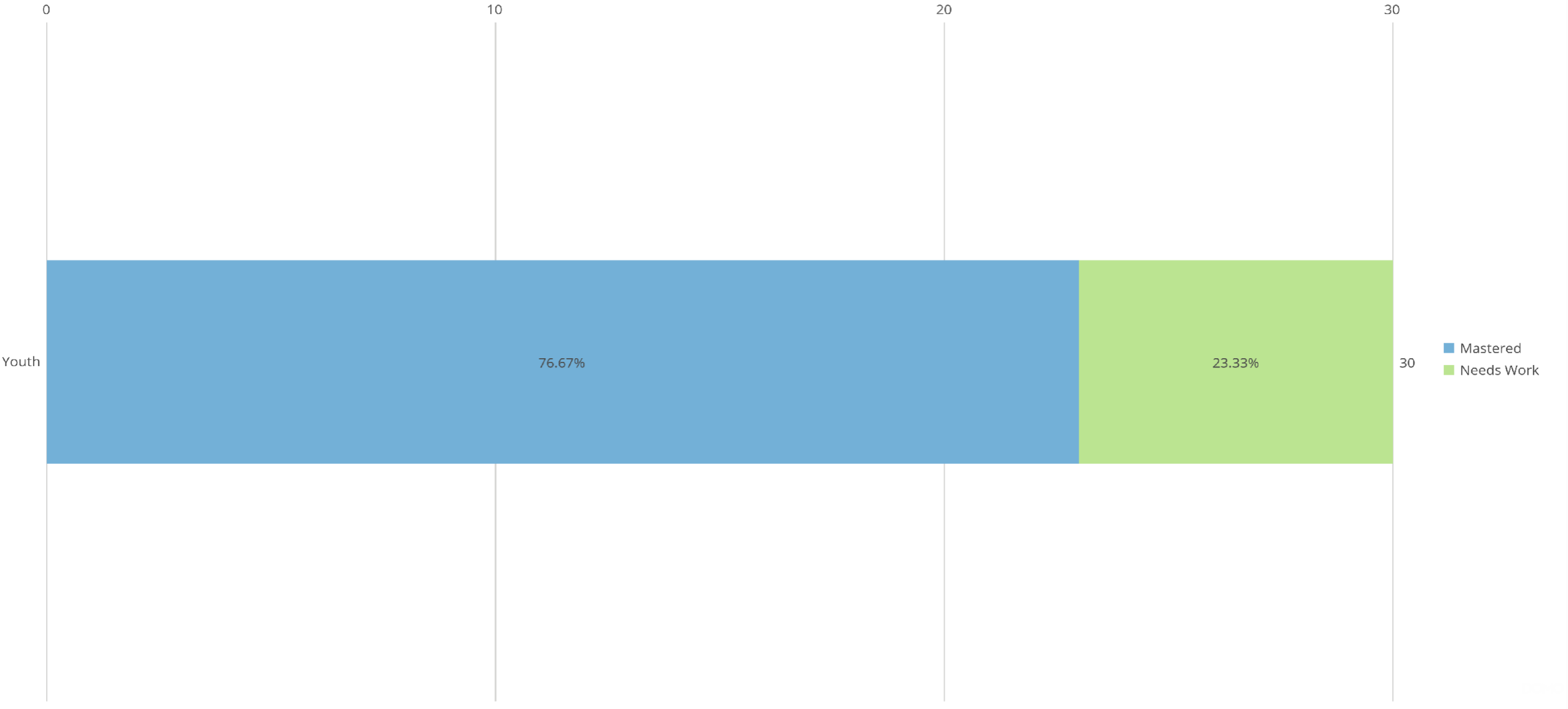
30 Completed Sims



# Virtual Training Facility - Sims by Class with Mastery Detail

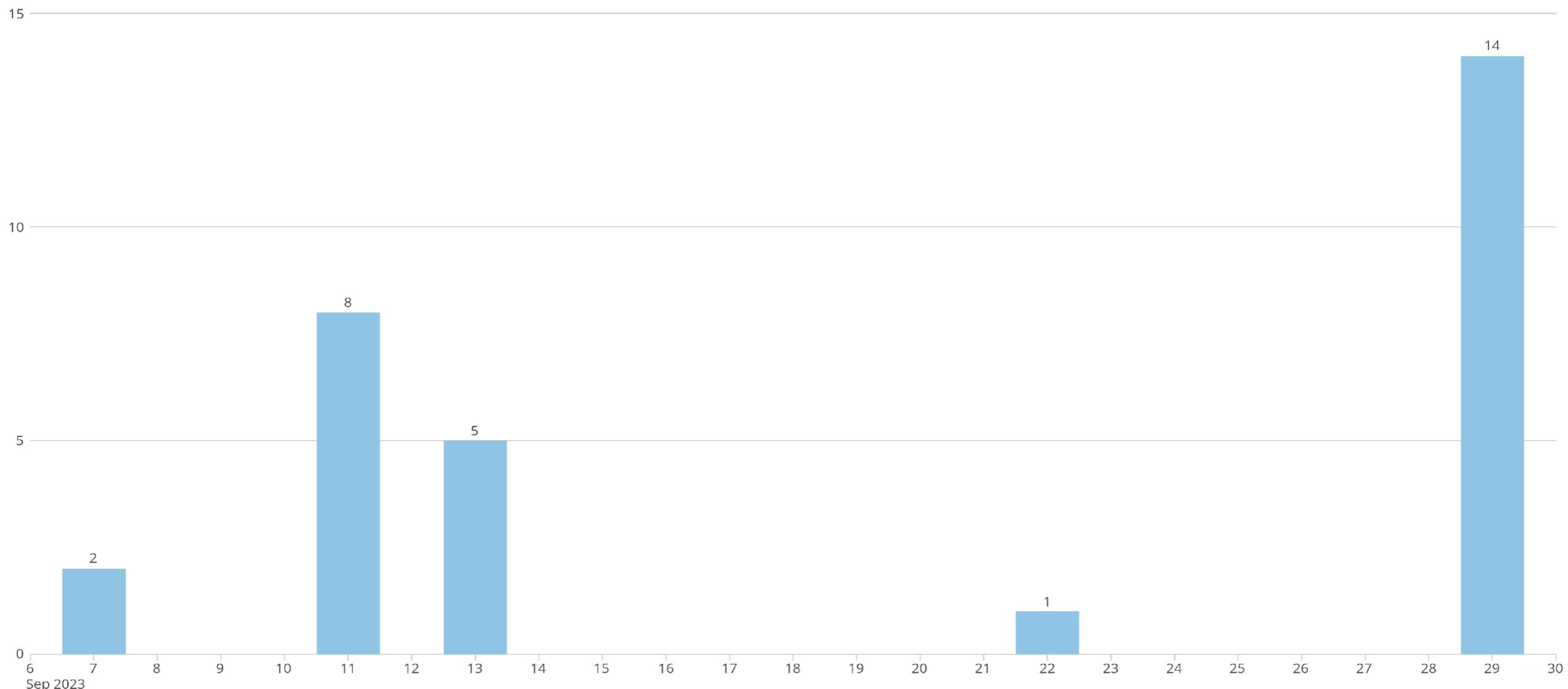
VTF - Total Sims by Class with Mastery Detail

30 Completed Sims



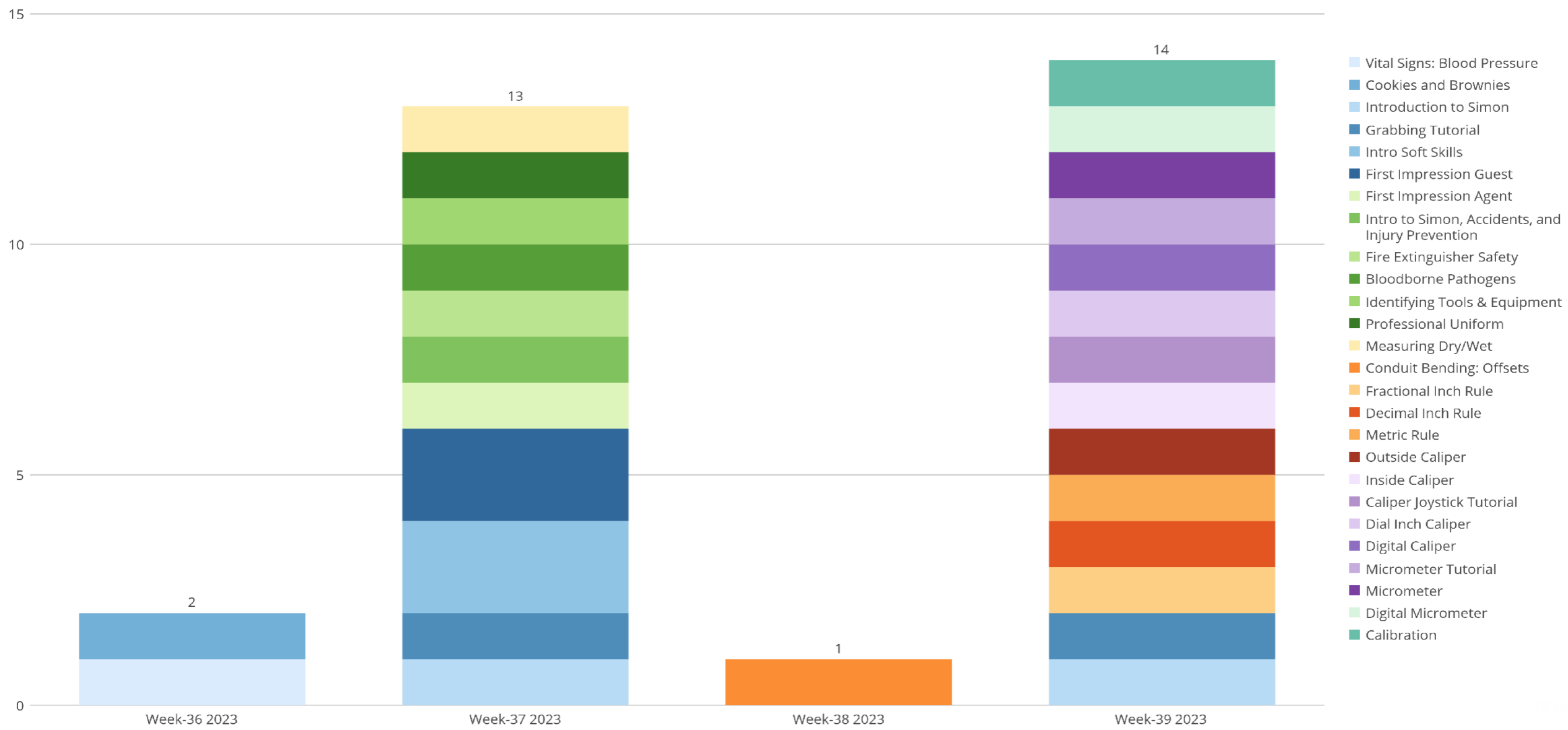
# Virtual Training Facility - Usage in Last 60 Days by Day

30 Completed Sims



# Virtual Training Facility - Usage in Last 30 Days by Sim

30 Completed Sims



# Predictive Reports

Adult	PY23	Q1
Employment Rate 2nd Quarter	73%	81%
Employment Rate 4th Quarter	67%	68%
Median Earnings	\$ 6,100.00	\$ 6,326.00
Credential Rate	66%	47%
Measurable Skill Gains	44%	24%
Dislocated Worker	PY23	Q1
Employment Rate 2nd Quarter	85%	89%
Employment Rate 4th Quarter	85%	69%
Median Earnings	\$ 9,000.00	\$ 9,352.00
Credential Rate	70%	83%
Measurable Skill Gains	44%	30%
Youth	PY23	Q1
Employment Rate 2nd Quarter	74%	68%
Employment Rate 4th Quarter	74%	67%
Median Earnings	\$ 3,800.00	\$ 4,067.00
Credential Rate	57%	17%
Measurable Skill Gains	36%	24%